

CARGOWALL

A ROLL FORM COMPANY

SMALL BODY BUILDER PRODUCT LINE



CARGOWALL LTD.

131 Lake Rd.

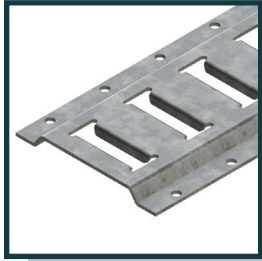
Bowmanville, Ontario

1-905-623-5111 • sales@cargowall.com

CARGOWALL.COM

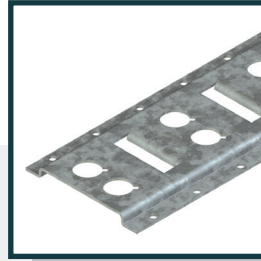
LOGISTIC TRACK

CARGOWALL



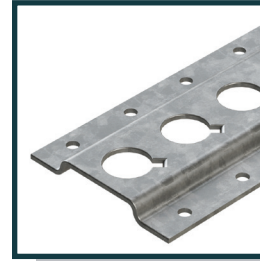
E-TRACK

- 12 gauge galvanized steel
- 50 min yield material
- Stock lengths: 10' 12'
- Lengths to your specification



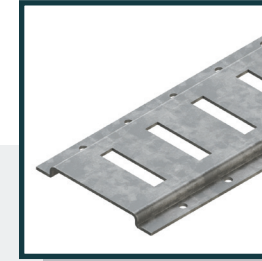
COMBO TRACK

- 12 gauge galvanized steel
- 50 min yield material
- Stock lengths: 10' & 12'
- Lengths to your specification



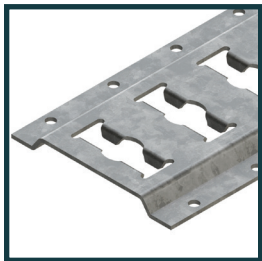
L-TRACK

- 12 gauge galvanized steel
- 50 min yield material
- Stock lengths: 10' & 12'
- Lengths to your specification



A-TRACK

- 12 gauge galvanized steel
- 50 min yield material
- Stock lengths: 10' & 12'
- Lengths to your specification



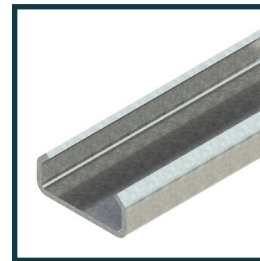
E-F COMBO TRACK

- 12 gauge galvanized steel
- 50 min yield material
- Stock lengths: 10' & 12'
- Fits all E & F Track Fittings
- Lengths to your specification



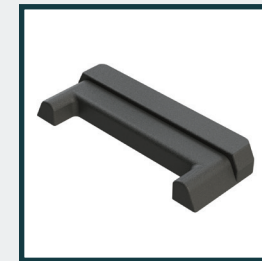
VERTICAL E-TRACK

- 12 gauge galvanized steel
- 50 min yield material
- Stock lengths: 10'
- Available with A-slot
- Lengths to your specification



WINCH TRACK

- 1/4" thick 50 min yield hot roll material
- Three profiles to fit all major winches
- Available in 6', 12', 24' lengths

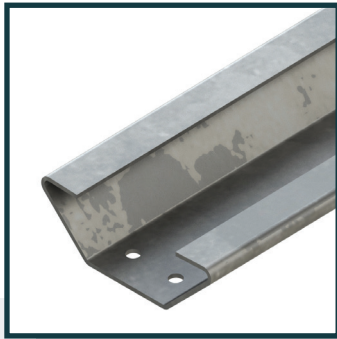


END CAP

- Plastic End Clip for E track
- Eliminates all sharp edge.
- Manufactured from glass filled polypropylene

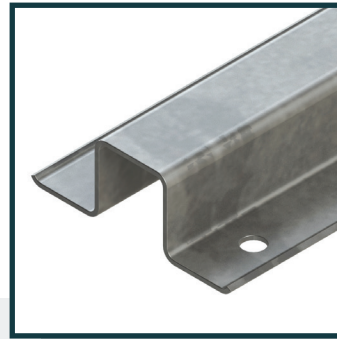
ROOF BOWS

CARGOWALL



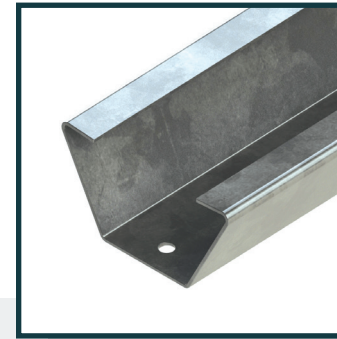
RB1608

- 1" anti-slag roof bow
- 16 and 18 gauge galvanized G60 material
- 50 min yield
- Pre-arched
- Pre-pierced attaching holes



RB1628

- 1" hat shape roof bow
- 16 and 18 gauge galvanized G60 material
- 50 min yield
- Pre-arched
- Pre-pierced attaching holes



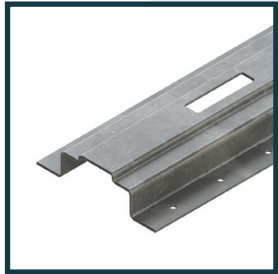
RB1807

- 1 3/8" hat shape roof bow
- 16 and 18 gauge galvanized G60 material
- 50 min yield
- Pre-arched
- Pre-pierced attaching holes



WALL POSTS

CARGOWALL



LOGISTIC POST

- 14 gauge
- G60 material
- 50 min yield
- E or A slots
- Rivet holes on 2" centers
- Lengths to your specification



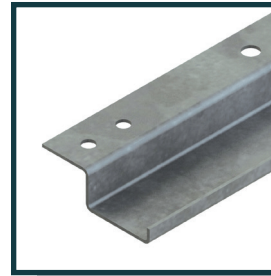
HAT POST

- 16 and 18 gauge galvanized
- G60 material
- Rivet holes pierced on 2" centers
- Lengths to your specification



Z POST

- 16 and 18 gauge galvanized
- G60 material
- Rivet holes pierced on 2" centers
- Lengths to your specification



PT1685

- 16 and 18 gauge galvanized
- G60 material
- Rivet holes pierced on 2" centers
- Lengths to your specification



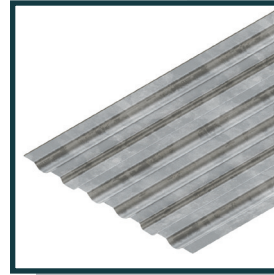
SMALL BODY BUILDER COMPONENTS

CARGOWALL



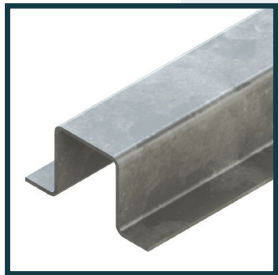
BUMPER TUBE

- 10 gauge hot roll material
- 80 yield material
- Anti-skid holes located as per your design
- Insert area protects reflective tape



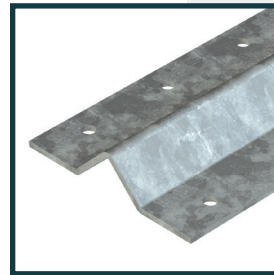
SCUFFLINER

- 16 and 18 gauge galvanized material
- High strength steel
- 5" & 12" high with corrugated ribs
- Lengths to your specification



CROSS MEMBER

- 12 gauge hot roll material
- 50 min yield
- High strength steel
- Eliminates potential rusting issues with tube



INTERIOR RUB RAIL

- 11 gauge galvanized material
- 50 min yield
- 281 or .344 attachment holes available
- 1" high x 4" wide

